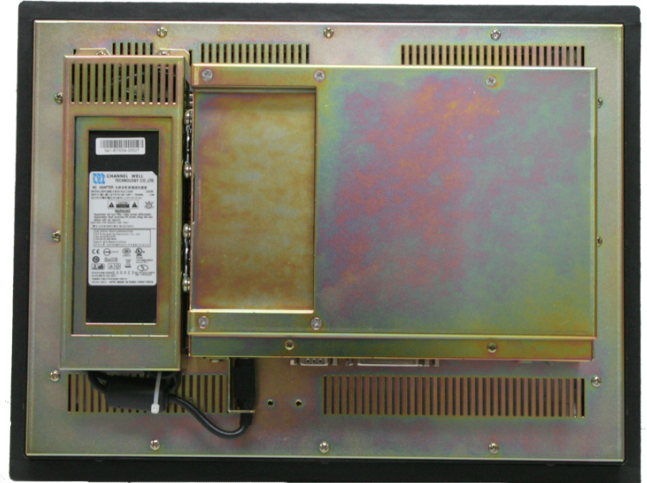
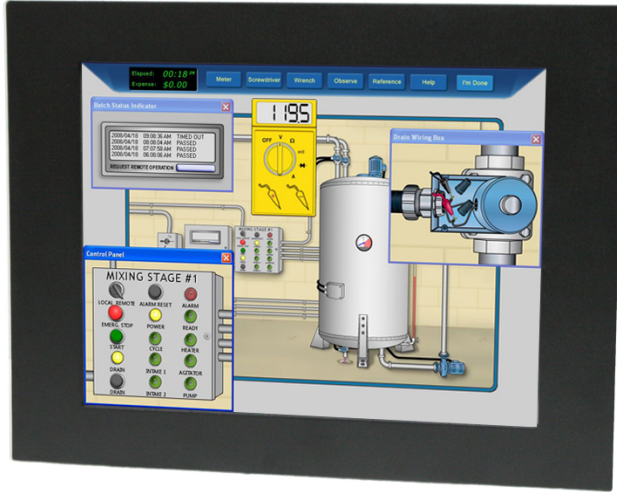


Transduction

Intel Dual Core Atom Processor

TR-LCD1500-ITX-7

TR-LCD1500-ITX-7 Industrial Rack/Panel Computer



Features

- Reliable industrial computer optimized for Windows 7 O/S.
- Intel Dual Core ATOM 1.8GHz D525 processor, supports 64-bit operation.
- Supports up to 4GB DDR3 800MHz memory.
- 15" TFT LCD touch screen with resolution 1024 x 768.
- Reliable resistive touch screen.
- Intel D525 integrated GMA3150 graphics engine - SVGA port
- Front panel with NEMA 4 epoxy finish.
- Robust design with sealed computer enclosure.
- 0 ~ 50°C operating temperature with full software load, 60°C for 2 hours.
- System reset programmable watchdog timer, 1-255sec.
- 2 x Realtek RT8111E Dual Gigabit LAN.
- 4 x USB, 2 x COM ports, 1 x parallel port, PS/2 keyboard/mouse ports and 2 x audio jacks.
- 2.5" SATA hard drive or high speed SATA flash drive up to 512GB.
- Warranty 3 years.

TR-LCD1500-ITX-7

Specification

Model

- TR-LCD1500-ITX-7 NEMA 4 industrial half fanless panel/rack computer with 15" LCD touch screen

Processor

- Intel Dual Core ATOM D525 1.8GHz with four threads

Cooling

- 3 x cooling fans with speed control
- One for CPU cooler and two for system fans

Chipset

- Intel ICH8M 64-bit

BIOS

- Award PnP Ver. 6.0
- 8Mbit FlashROM with BootBlock for fail-safe

TFT LCD Display

- Resolution - 1024 x 768 (XGA)
- Backlight MTBF - 150,000 hours
- Contrast Ratio - 350:1
- Brightness - 250cd/m²
- Resistive touch screen

Memory

- Up to 4GB SO-DIMM DDR3 800MHz memory

Ethernet

- 2 x Realtek RT8111E Gigabit LAN ports
- PXE Boot ROM and WOL supported

Display

- Intel D525 integrated GMA3150 Graphic Engine interface
- 1 x D-Sub female connector for CRT displays
- Dual VGA display supported
- Dual independant display - display devices can be selected by BIOS or graphics drivers

Green Function

- Power saving mode includes doze, standby and suspend modes

Disk I/O

- Optional SLIM CD-R/W-DVD
- One or two 2.5" SATA hard drives, 500 or 1000GB. Optional 64GB, up to 256GB flash drive with S.M.A.R.T. and SUPERCAP features. Optional RAID1.

Audio

- Realtek ALC888 high definition
- 7.1 channel surrounding audio support

External I/O Ports

- D-Sub SVGA port
- COM1 and COM2 ports - COM2 is RS-232/422/485 selectable by jumper. Pin9 powered with either +5V or +12V by jumper
- 1 x parallel printer port supports SPP/ECP/EPP mode
- 4 x high speed USB 2.0 ports on rear panel
- 2 x audio jacks - Line-out and MIC

Watch-Dog Timer

- System reset programmable watchdog timer with 1 ~ 255sec time-out value

CMOS

- On-board RTC with 242 bytes of battery backup RAM

Operating Temperature

- 0 ~ 50°C (32 ~ 122°F) with hard drive
- 0 ~ 60°C (32 ~ 140°F) for 2 hours with SSD

Storage Temperature

- -20 ~ 85°C (-4 ~ 185°F)

Humidity

- Relative humidity 10 ~ 90%, non-condensing
- Storage: Relative humidity 45% max. non-condensing

Power Requirement

- DC 12V input with 4-pins Mini-DIN connector
- Includes universal AC 12VDC 100W power adapter
- Optional DC input 12, 24, 48, 125 and 250V

Shock and Vibration

- Shock - 25G, Vibration - 5G

TR-LCD1500-ITX-7

Specification

Compliance: Electrical Safety Approval, CE and FCC Class B

Compatible with Windows 10 (32/64-bit), Windows 7 (32/64-bit), Windows Vista, Windows XP, Windows 2000, QNX, Linux and DOS 6.22

Warranty: 3 years

Dimensions

- Panel mount version - 3.943" (4.625" with CD/DVD) (H) x 12.250" (D) x 16.00" (W)
- Rack mount version - 3.943" (4.625" with CD/DVD) (H) x 12.230" (D) x 18.960" (W)

Weight

- 7kg (15.43lbs)