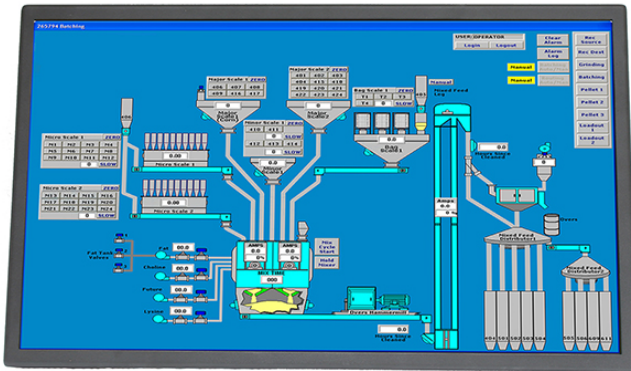


Transduction

Panel, VESA or Door Mount Monitor

TR-LCD2300W

TR-LCD2300W 23" Wide Screen Industrial LCD Monitor



Features

- Wide screen 23" industrial quality LCD and optional touch screen with resolution 1920 x 1080.
- Compliant with US Atomic Energy Commission IEEE Class 1E equipment standard for use in nuclear power plants.
- Available in panel (PM), VESA (VM) or Door (DM) versions.
- No need for video drivers.
- 23" viewable area. Aspect ratio 16:9.
- Brightness 300cd/m².
- Contrast ratio 1000:1.
- Wide viewing angle - 89° V/H.
- Response time 3.5ms.
- Pixel pitch 0.2652mm.
- Rear OSD control buttons in English, French, German, Spanish and Italian.
- 89-250VAC input power or 90 - 275VDC input power.
- Operating temperature 0 ~ 50°C (32 ~ 122°F), 60°C (140°F) for 2 hours.
- Optional BNC type RGB input with sync on Green.
- Optional NEMA4X version for harsh environments.
- Warranty 5 years with telephone service support for life.
- Manufactured by Transduction in Canada, always in stock.

TRANSDUCTION 5155 Spectrum Way, Bldg 23, Mississauga, ON L4W 5A1
1.800.268.0427 905.625.1907 Fax: 905.625.0531
www.transduction.com Email: sales@transduction.com

Transduction

Panel, VESA or Door Mount Monitor

TR-LCD2300W

TR-LCD2300W 23" Wide Screen Industrial LCD Monitor

Specification

Model

- TR-LCD2300W Wide screen 23" LCD industrial monitor.

LCD Module

- Viewable image size - 23". Aspect ratio 16:9
- Resolution (pixel count) - 1920 x 1080
- Dot pitch - 0.2652mm
- Brightness - 300cd/m² white luminence
- Contrast - 1000:1

Input Signal

- SVGA Analog RGB
- DVI-I
- Optional BNC type RGB input with sync on Green

Display Colors

- Analog input 16.7M

Viewing Angle

- Horizontal - 89°
- Vertical - 89°

Synchronization Range

- Horizontal - 54.2KHz to 83.8KHz
- Vertical - 49Hz to 75Hz
- No need for video drivers
- OSD commands in English, French, German, Spanish and Italian

Resolution

- Analog RGB - VGA/SVGA/XGA/WXGA+ 1920 x 1080 @ 83Hz max.
- DVI-I - VGA/SVGA/XGA/WXGA+ 1920 x 1080 @ 83Hz max.

Active Display Area

- Vertical - 286.41mm
- Horizontal - 509.18mm

Power Supply

- AC power input: 89 - 250VAC 50/60Hz
- DC power input: 90 - 275VDC
- Input current: 2A max.
- Output: 12VDC +/-0.1V /8.0A, 95W

Power Consumption

- 24W max.

Power Efficiency

- 80% minimum at full load

Operating Temperature

- 0 ~ 50°C (32 ~ 122°F), 60°C (140°F) for 2 hours

Operating Humidity

- Relative humidity 10 ~ 90%, non-condensing

Altitude

- 0 - 10,000ft

Storage Temperature

- -20 ~ 60°C (-4 ~ 140°F)

Storage Humidity

- Relative humidity 10 ~ 90%, non-condensing

Altitude

- 0 - 30,000ft

Dimensions

- 21.30" (L) x 2.63" (W) x 12.60" (H) (54.10cm (L) x 6.68cm (W) x 32.00cm (H))

Weight

- 11.02lbs (5.0kg)
- 12.12lbs (5.5kg) - with VESA bracket

Vibration & Shock

- 7.5G and 50G

Compliance: IEEE Class 1E, FCC Class B, CE, UL, CSA

(Qualification reports available upon request)

Additional Options

- Bracket for VESA mounting
- USB resistive touch screen
- BNC type RGB input with sync on Green
- NEMA4X version for harsh environments

Warranty: 5 years

Ordering

- TR-LCD2300W-PM - Panel mount version
- TR-LCD2300W-VM - VESA mount version