

# Transduction

TR-LCD1900-RM  
TR-LCD1900-PM

19" Rack Mount LCD Monitor  
19" Panel Mount LCD Monitor

TR-LCD1900: SVGA, DVI-D, NTSC, PAL, SECAM

## Features

- Viewable area 14.90" x 12.00"
- Brightness 300 cd/m<sup>2</sup>
- Contrast ratio 700:1
- Viewing angle V/H 80 °/75°
- Response time 8ms
- Pixel pitch 0.294mm
- Maximum Resolution 1280 x 1024
- Input power 100-240V AC or 12V DC, optional 24V, 48V, 125V and 250VDC
- Warranty 3 years



**Reliable 19" TFT LCD SXGA module in industrial rack mount or panel mount enclosure. NEMA 4 epoxy coated finish over steel. Optional stainless steel version. Optional resistive touch screen.**

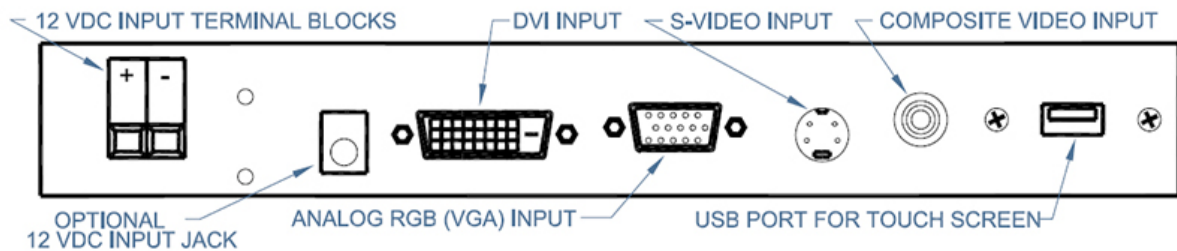
**OSD (On-Screen Display) Controls:** Allow you to quickly and easily adjust elements of your screen image with simple to use on-screen menus: English, French, Italian, German and Spanish.

**Full Scan Capability:** Allows you to use the entire screen area.

**Plug and Play:** The Microsoft solution with the Windows 95/98/ME/2000/XP/7/10 operating systems facilitates setup and installation by allowing the monitor to send its capabilities (such as screen size and resolutions supported) directly to your computer, automatically optimizing display performance.

**ErgoDesign Features:** Enhance human ergonomics to improve the working environment, protect the health of the user and save money.

**Power Saving Mode:** The monitor can be set to shift to a lower power consumption level when not in use. This will save useful life of backlight lamps.



**TRANSDUCTION** 5155 Spectrum Way, Bldg 23, Mississauga, ON L4W 5A1  
1.800.268.0427 905.625.1907 Fax: 905.625.0531  
www.transduction.com Email: sales@transduction.com

# Transduction

TR-LCD1900-RM  
TR-LCD1900-PM

19" Rack Mount LCD Monitor  
19" Panel Mount LCD Monitor

TR-LCD1900: SVGA,DVI-D,NTSC,PAL,SECAM

## SPECIFICATIONS:

- **Reliable LCD Module:**

Diagonal: 19.0 inch

Viewable Image Size: 14.90" x 12.00"

Native Resolution (Pixel Count): 1280 x 1024

Active matrix, thin film transistor (TFT) liquid crystal display (0.294 mm dot pitch, 300cd/m<sup>2</sup> white luminance, 700:1 contrast ratio)

- **Input Signal:**

SVGA Analog RGB

DVI - D

Composite Video & S - Video

- **Display Colors:** Analog input 16,194,277

- **Maximum Viewing Angles:**

Left/Right and Up/Down - 80°/75°

- **Synchronization Range:**

Horizontal: 15 KHz to 80 KHz

Vertical: 50 Hz to 77Hz

- **Resolution:**

Analog RGB : VGA/SVGA/XGA/WXGA/SXGA

1280 x 1024 @ 75Hz Max

DVI - D : VGA/SVGA/XGA/WXGA/SXGA

1280 x 1024 @ 60Hz Max

CVBS & S - VIDEO : NTSC/PAL/SECAM

- **Active Display Area:**

Horizontal: 376.32 mm

Vertical: 301.056 mm

- **Power Supply:** 100 - 240 V ~ 50/60 Hz

60W external 12V DC adapter

- **Dimensions ( W x D x H ) / Weight :**

Rack mount: 18.96" x 2.875" x 14" ( 8U ) / 14.3 lb

48.16cm x 7.3cm x 35.56cm / 6.5 kg

Panel mount: 17.75" x 3.00" x 15.25" / 14 lb

45.09cm x 7.62cm x 38.74cm / 6.35kg

- **Environmental Considerations:**

Operating Temperature: 0°C to 50°C

Humidity: 20% to 80% , non-condensing

Altitude: 0 to 10,000 ft

Storage Temperature: -20°C to 60°C

Humidity: 5% to 90%, non-condensing

Vibration & Shock: 5/30 G

Altitude: 0 to 30,000 ft

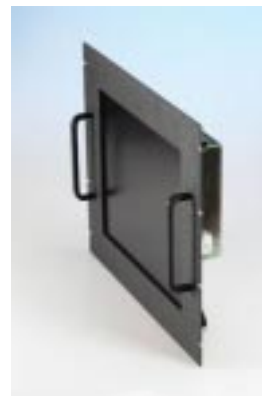
- **Regulatory Approvals:**

UL CSA CE

- **Ordering Information:**

TR-LCD1900-RM Rack Mount version

TR-LCD1900-PM Panel Mount version



## OPTIONS:

- TOUCH (Resistive USB)
- 12V DC Input power
- 24V DC Input power
- 48V DC Input power
- 125V DC Input power
- 250V DC Input power