

Transduction

TR-LCD1900-RM
TR-LCD1900-PM

19" Rack Mount LCD Monitor
19" Panel Mount LCD Monitor

TR-LCD1900: SVGA, DVI-D, NTSC, PAL, SECAM

Features

- Viewable area 19"
- Brightness 300 cd/m²
- Contrast ratio 700:1
- Viewing angle V/H 80°/75°
- Response time 8ms
- Pixel pitch 0.294mm
- Maximum Resolution 1280 x 1024
- Input power 100-240V AC or 12V DC, optional 24V, 48V, 125V and 250VDC
- Warranty 3 years



Reliable LG 19" TFT LCD SXGA module in industrial rack mount or panel mount enclosure. NEMA 4 epoxy coated finish over steel. Optional stainless steel version. Optional resistive touch screen.

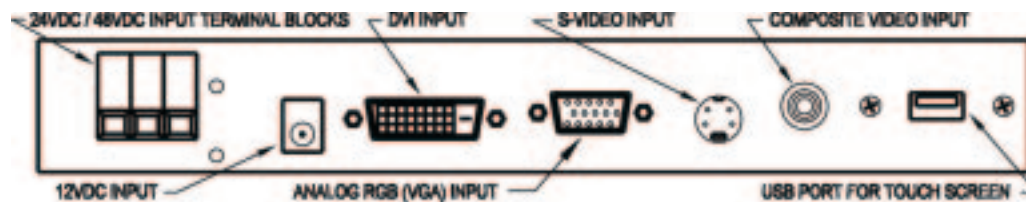
OSD (On-Screen Display) Controls: Allow you to quickly and easily adjust elements of your screen image with simple to use on-screen menus: English, French, Italian, German and Spanish.

Full Scan Capability: Allows you to use the entire screen area.

Plug and Play: The Microsoft solution with the Windows 95/98/ME/2000/XP operating systems facilitates setup and installation by allowing the monitor to send its capabilities (such as screen size and resolutions supported) directly to your computer, automatically optimizing display performance.

ErgoDesign Features: Enhance human ergonomics to improve the working environment, protect the health of the user and save money.

Power Saving Mode: The monitor can be set to shift to a lower power consumption level when not in use. This will save useful life of backlight lamps.



Transduction

TR-LCD1900-RM
TR-LCD1900-PM

19" Rack Mount LCD Monitor
19" Panel Mount LCD Monitor

TR-LCD1900: SVGA,DVI-D,NTSC,PAL,SECAM

SPECIFICATIONS:

- **Reliable LG LCD Module:**

Diagonal: 19.0 inch

Viewable Image Size: 19.0 inch

Native Resolution (Pixel Count): 1280 x 1024

Active matrix, thin film transistor (TFT) liquid crystal display (0.294 mm dot pitch, 300cd/m² white luminance, 800:1 contrast ratio)

- **Input Signal:**

SVGA Analog RGB

DVI - D

Composite Video & S - Video

- **Display Colors:** Analog input 16,194,277

- **Maximum Viewing Angles:**

Left/Right and Up/Down - 80°

- **Synchronization Range:**

Horizontal: 15 KHz to 80 KHz

Vertical: 50 Hz to 77Hz

- **Resolution:**

Analog RGB : VGA/SVGA/XGA/WXGA/SXGA

1280 x 1024 @ 75Hz Max

DVI - D : VGA/SVGA/XGA/WXGA/SXGA

1280 x 1024 @ 60Hz Max

CVBS & S - VIDEO : NTSC/PAL/SECAM

- **Active Display Area:**

Horizontal: 376.32 mm

Vertical: 301.056 mm

- **Power Supply:** 100 - 240 V ~ 50/60 Hz

60W external 12V DC adapter

- **Dimensions (W x D x H) / Weight :**

Rack mount: 18.96" x 2.875" x 14" (8U) / 14.3 lb

48.16cm x 7.3cm x 35.56cm / 6.5 kg

Panel mount: 17.75" x 3.00" x 15.25" / 14 lb

45.09cm x 7.62cm x 38.74cm / 6.35kg

- **Environmental Considerations:**

Operating Temperature: 0°C to 50°C

Humidity: 20% to 80% , non-condensing

Altitude: 0 to 10,000 ft

Storage Temperature: -20°C to 60°C

Humidity: 5% to 90%, non-condensing

Vibration & Shock: 5/30 G

Altitude: 0 to 30,000 ft

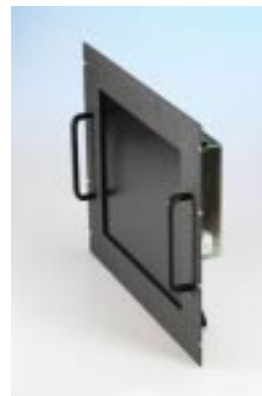
- **Regulatory Approvals:**

UL CSA CE

- **Ordering Information:**

TR-LCD1900-RM Rack Mount version

TR-LCD1900-PM Panel Mount version



OPTIONS:

- TOUCH (Resistive USB)
- 12V DC Input power
- 24V DC Input power
- 48V DC Input power
- 125V DC Input power
- 250V DC Input power

TRANSDUCTION 5155 Spectrum Way, Bldg 23, Mississauga, ON L4W 5A1

1.800.268.0427 905.625.1907 Fax: 905.625.0531

www.transduction.com Email: sales@transduction.com